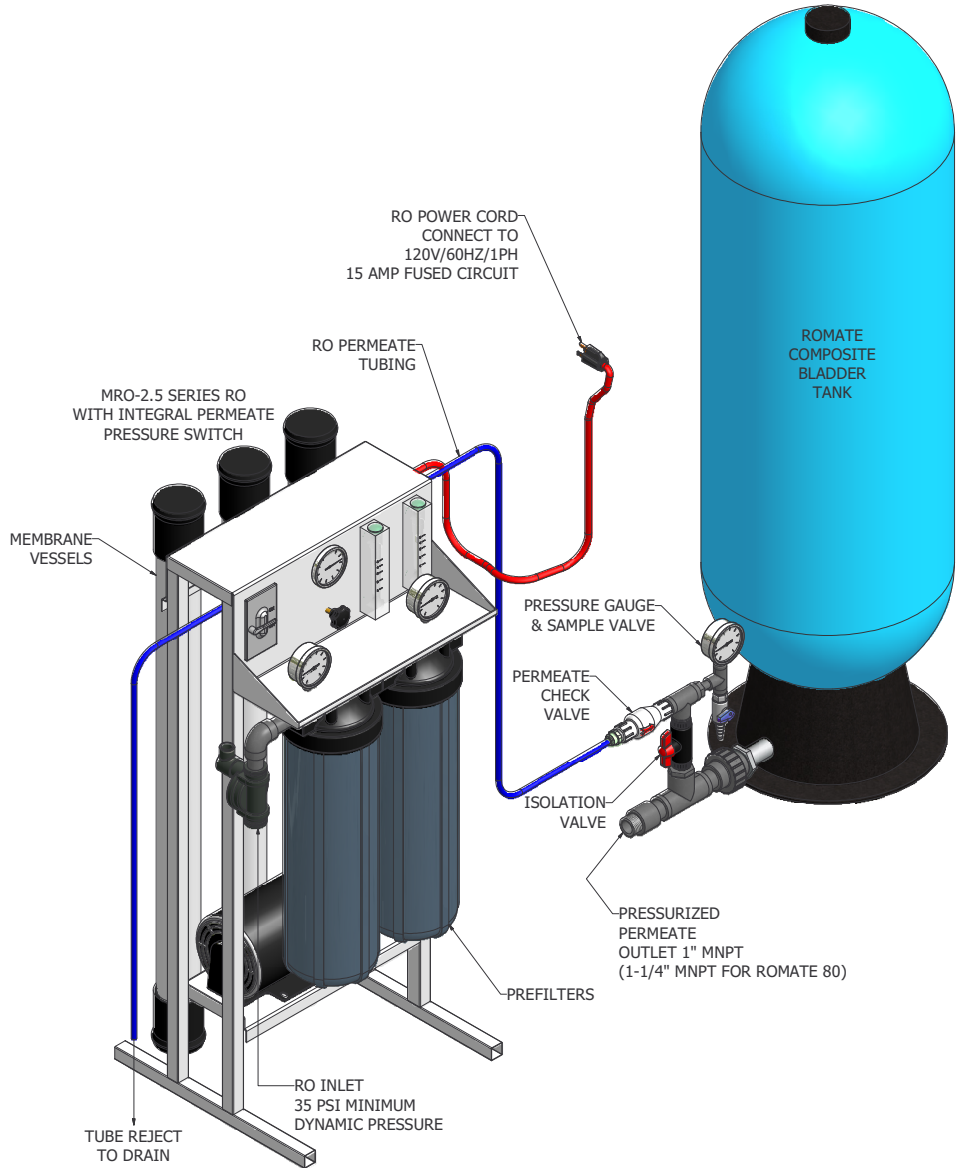


8 7 6 5 4 3 2 1



2.5" SERIES REVERSE OSMOSIS UNITS						
MODEL	DIMENSION L x W x H	PIPING CONN			MOTOR	MAX. GPD @ 77° F
		INLET	PERMEATE	REJECT		
MRO-200	22" x 7" x 31"	1/4" TUBE	1/4" TUBE	1/4" TUBE	N/A	200
MRO-300	28" x 7" x 33"	3/8" TUBE	3/8" TUBE	1/4" TUBE	N/A	300
MRO-500	20" x 14" x 27"	3/4" NPT	3/8" TUBE	3/8" TUBE	1/3 HP	500
MRO-1000	20" x 14" x 27"	3/4" NPT	3/8" TUBE	3/8" TUBE	1/2 HP	1000
MRO-1500	23" x 19" x 46"	3/4" NPT	3/8" TUBE	3/8" TUBE	3/4 HP	1500
MRO-2500	23" x 19" x 46"	3/4" NPT	3/8" TUBE	3/8" TUBE	3/4 HP	2500

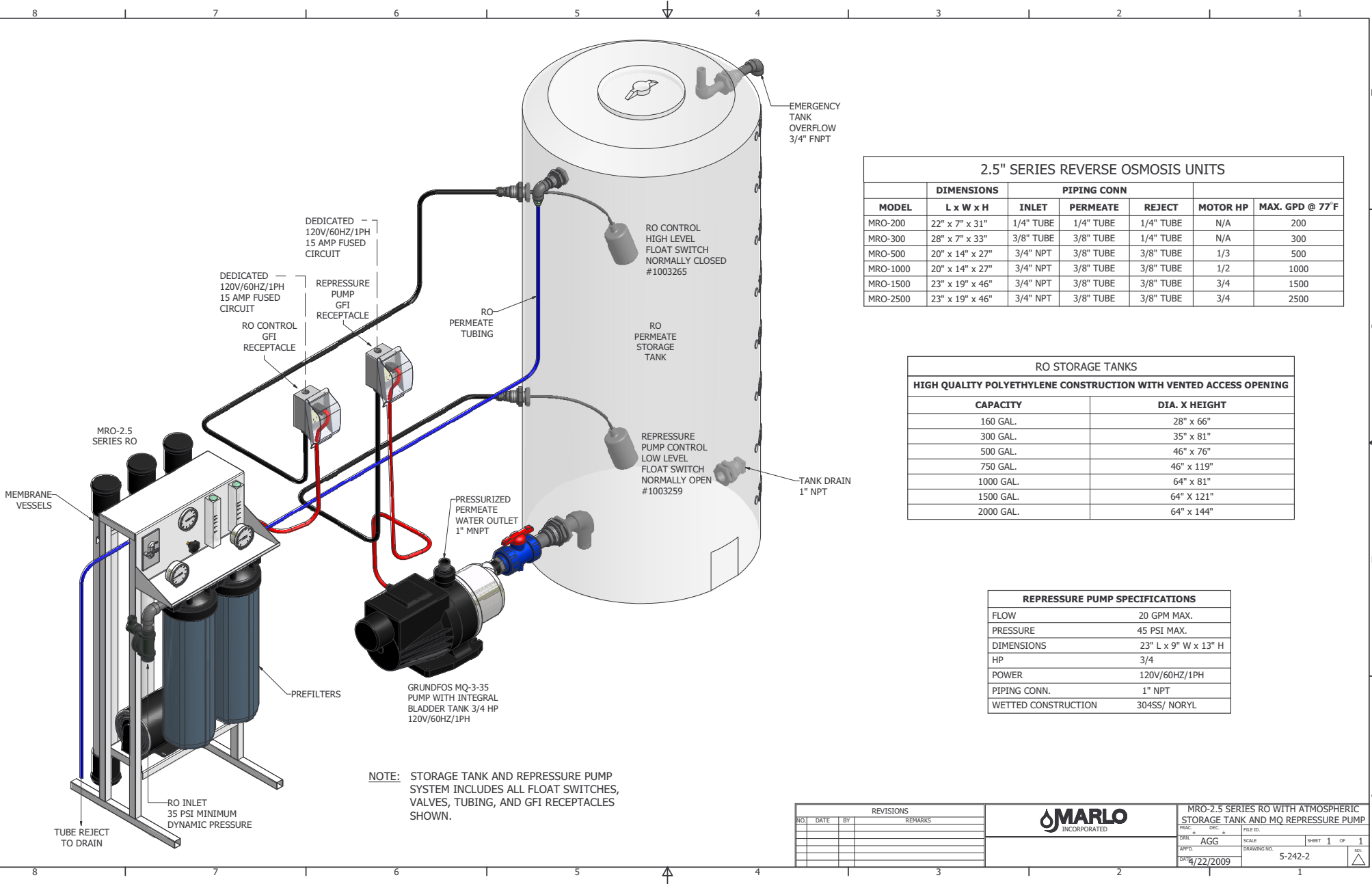
RO BLADDER TANK SPECIFICATIONS FRP CONSTRUCTION NSF/FDA LISTED		
MODEL	DIA X HEIGHT	CAPACITY @ 50 PSI
ROMATE 15	16" x 27"	7 GAL.
ROMATE 20	16" x 33"	10 GAL.
ROMATE 30	16" x 44"	15 GAL.
ROMATE 40	16" x 57"	20 GAL.
ROMATE 80	25" x 56"	40 GAL.

NOTE: DIRECT FEED BLADDER TANK INCLUDES ALL PIPING, VALVES, ETC. SHOWN FOR COMPLETE OPERATIONAL SYSTEM.

REVISIONS				MARLO INCORPORATED	MRO-2.5 SERIES RO WITH DIRECT FEED BLADDER TANK		
NO.	DATE	BY	REMARKS		TRAC #	DEC #	FILE ID.

SCALE	SHEET 1 OF 1
DRAWING NO. 5-242-1	DATE 12/22/2009

8 7 6 5 4 3 2 1



NOTE: STORAGE TANK AND REPRESSURE PUMP SYSTEM INCLUDES ALL FLOAT SWITCHES, VALVES, TUBING, AND GFI RECEPTACLES SHOWN.

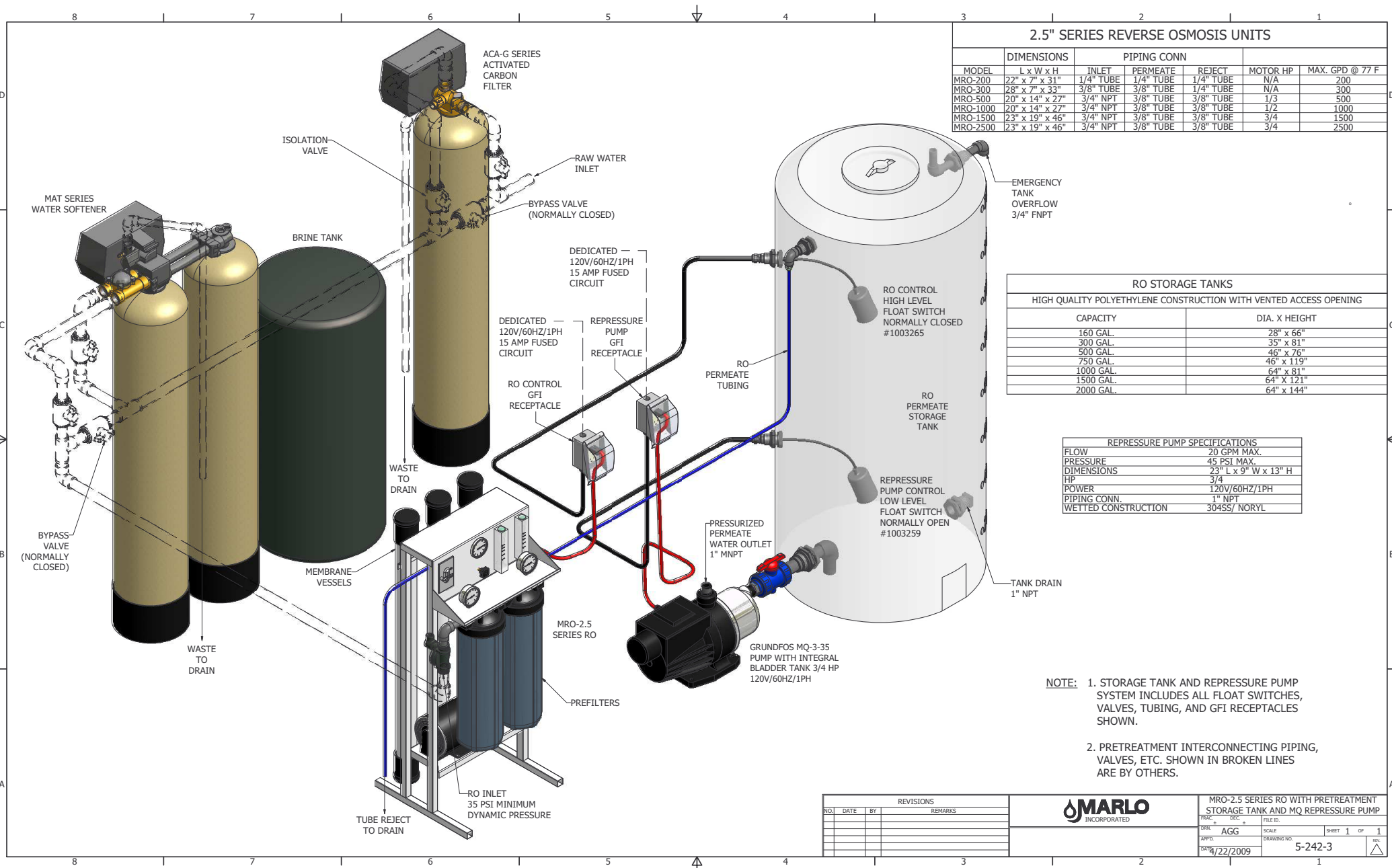
2.5" SERIES REVERSE OSMOSIS UNITS						
MODEL	DIMENSIONS L x W x H	PIPING CONN			MOTOR HP	MAX. GPD @ 77°F
		INLET	PERMEATE	REJECT		
MRO-200	22" x 7" x 31"	1/4" TUBE	1/4" TUBE	1/4" TUBE	N/A	200
MRO-300	28" x 7" x 33"	3/8" TUBE	3/8" TUBE	1/4" TUBE	N/A	300
MRO-500	20" x 14" x 27"	3/4" NPT	3/8" TUBE	3/8" TUBE	1/3	500
MRO-1000	20" x 14" x 27"	3/4" NPT	3/8" TUBE	3/8" TUBE	1/2	1000
MRO-1500	23" x 19" x 46"	3/4" NPT	3/8" TUBE	3/8" TUBE	3/4	1500
MRO-2500	23" x 19" x 46"	3/4" NPT	3/8" TUBE	3/8" TUBE	3/4	2500

RO STORAGE TANKS	
HIGH QUALITY POLYETHYLENE CONSTRUCTION WITH VENTED ACCESS OPENING	
CAPACITY	DIA. X HEIGHT
160 GAL.	28" x 66"
300 GAL.	35" x 81"
500 GAL.	46" x 76"
750 GAL.	46" x 119"
1000 GAL.	64" x 81"
1500 GAL.	64" x 121"
2000 GAL.	64" x 144"

REPRESSURE PUMP SPECIFICATIONS	
FLOW	20 GPM MAX.
PRESSURE	45 PSI MAX.
DIMENSIONS	23" L x 9" W x 13" H
HP	3/4
POWER	120V/60HZ/1PH
PIPING CONN.	1" NPT
WETTED CONSTRUCTION	304SS/ NORYL

REVISIONS				MARLO INCORPORATED	MRO-2.5 SERIES RO WITH ATMOSPHERIC STORAGE TANK AND MQ REPRESSURE PUMP
NO.	DATE	BY	REMARKS		

TRAC #	DEC #	FILE ID.	SCALE	SHEET 1 OF 1
AGG				
DATE		DRAWING NO.		
8/22/2009		5-242-2		



2.5" SERIES REVERSE OSMOSIS UNITS

MODEL	DIMENSIONS L x W x H	PIPING CONN			MOTOR HP	MAX. GPD @ 77 F
		INLET	PERMEATE	REJECT		
MRO-200	22" x 7" x 31"	1/4" TUBE	1/4" TUBE	1/4" TUBE	N/A	200
MRO-300	28" x 7" x 33"	3/8" TUBE	3/8" TUBE	1/4" TUBE	N/A	300
MRO-500	20" x 14" x 27"	3/4" NPT	3/8" TUBE	3/8" TUBE	1/3	500
MRO-1000	20" x 14" x 27"	3/4" NPT	3/8" TUBE	3/8" TUBE	1/2	1000
MRO-1500	23" x 19" x 46"	3/4" NPT	3/8" TUBE	3/8" TUBE	3/4	1500
MRO-2500	23" x 19" x 46"	3/4" NPT	3/8" TUBE	3/8" TUBE	3/4	2500

RO STORAGE TANKS
HIGH QUALITY POLYETHYLENE CONSTRUCTION WITH VENTED ACCESS OPENING

CAPACITY	DIA. X HEIGHT
160 GAL.	28" x 66"
300 GAL.	35" x 81"
500 GAL.	46" x 76"
750 GAL.	46" x 119"
1000 GAL.	64" x 81"
1500 GAL.	64" x 121"
2000 GAL.	64" x 144"

REPRESSURE PUMP SPECIFICATIONS

FLOW	20 GPM MAX.
PRESSURE	45 PSI MAX.
DIMENSIONS	23" L x 9" W x 13" H
HP	3/4
POWER	120V/60HZ/1PH
PIPING CONN.	1" NPT
WETTED CONSTRUCTION	304SS/ NORYL

- NOTE:**
1. STORAGE TANK AND REPRESSURE PUMP SYSTEM INCLUDES ALL FLOAT SWITCHES, VALVES, TUBING, AND GFI RECEPTACLES SHOWN.
 2. PRETREATMENT INTERCONNECTING PIPING, VALVES, ETC. SHOWN IN BROKEN LINES ARE BY OTHERS.

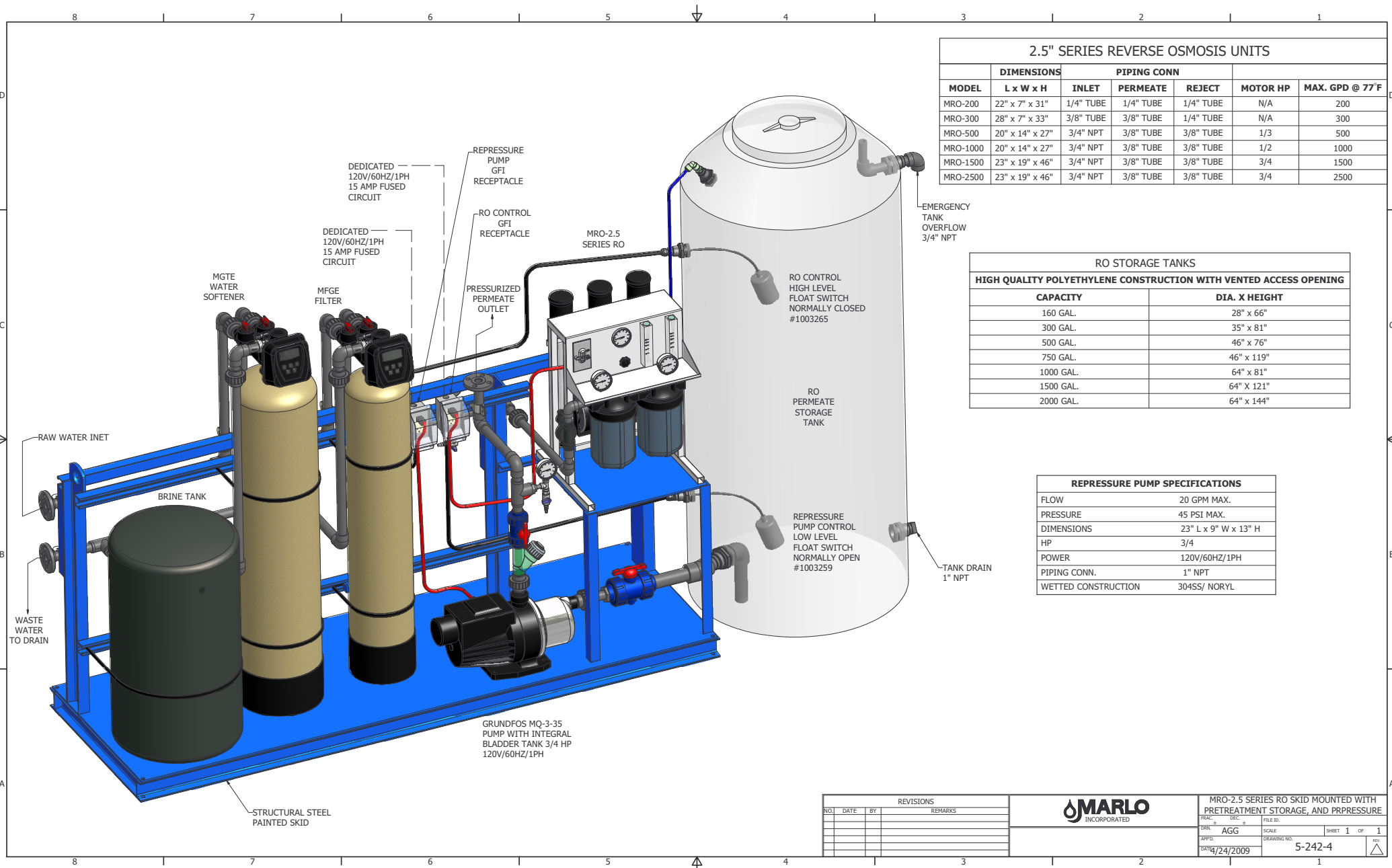
REVISIONS

NO.	DATE	BY	REMARKS



MRO-2.5 SERIES RO WITH PRETREATMENT STORAGE TANK AND MQ REPRESSURE PUMP

TRAC	DEC	FILE ID.	
LINK	AGG	SCALE	SHEET 1 OF 1
DATE	22/2009	DRAWING NO.	5-242-3



2.5" SERIES REVERSE OSMOSIS UNITS						
MODEL	DIMENSIONS L x W x H	PIPING CONN			MOTOR HP	MAX. GPD @ 77°F
		INLET	PERMEATE	REJECT		
MRO-200	22" x 7" x 31"	1/4" TUBE	1/4" TUBE	1/4" TUBE	N/A	200
MRO-300	28" x 7" x 33"	3/8" TUBE	3/8" TUBE	1/4" TUBE	N/A	300
MRO-500	20" x 14" x 27"	3/4" NPT	3/8" TUBE	3/8" TUBE	1/3	500
MRO-1000	20" x 14" x 27"	3/4" NPT	3/8" TUBE	3/8" TUBE	1/2	1000
MRO-1500	23" x 19" x 46"	3/4" NPT	3/8" TUBE	3/8" TUBE	3/4	1500
MRO-2500	23" x 19" x 46"	3/4" NPT	3/8" TUBE	3/8" TUBE	3/4	2500

RO STORAGE TANKS HIGH QUALITY POLYETHYLENE CONSTRUCTION WITH VENTED ACCESS OPENING	
CAPACITY	DIA. X HEIGHT
160 GAL.	28" x 66"
300 GAL.	35" x 81"
500 GAL.	46" x 76"
750 GAL.	46" x 119"
1000 GAL.	64" x 81"
1500 GAL.	64" x 121"
2000 GAL.	64" x 144"

REPRESSURE PUMP SPECIFICATIONS	
FLOW	20 GPM MAX.
PRESSURE	45 PSI MAX.
DIMENSIONS	23" L x 9" W x 13" H
HP	3/4
POWER	120V/60HZ/1PH
PIPING CONN.	1" NPT
WETTED CONSTRUCTION	304SS/ NORLYL

REVISIONS			
NO.	DATE	BY	REMARKS



MRO-2.5 SERIES RO SKID MOUNTED WITH PRETREATMENT STORAGE, AND PRPRESSURE			
TRAC #	DEC #	FILE ID.	SCALE
AGG			
DATE	12/24/2009	DRAWING NO.	5-242-4
SHEET 1 OF 1			REV. 1